

OnCourse

TOURS AND TRAVEL



MELBOURNE INTERNATIONAL FLOWER SHOW

7 DAY FLY/DRIVE TOUR

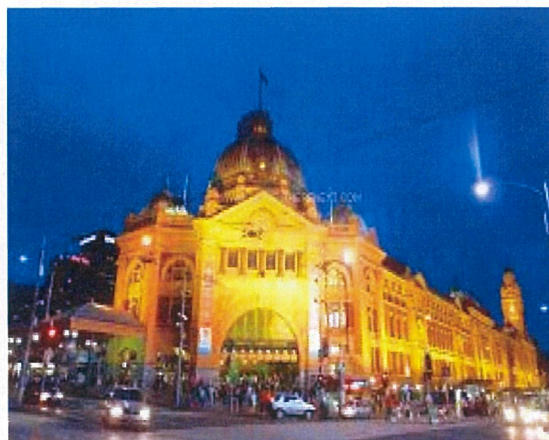
23RD - 29TH MARCH 2020

The Melbourne International Flower and Garden show is celebrating its 25th year with an explosion of colour and design and proudly remains the largest in the Southern Hemisphere. The event is staged within the world Heritage listed Royal Exhibition Building (home to our first Federal Parliament) and the surrounding Carlton Gardens.

The show will once again bring the creativity and passion of Australia's top floral and landscape designers to Melbourne, delivered in stunning displays as well as a strong environmental message for gardening in the climate we live in. The show is an amazing celebration of Australian lifestyle and our great outdoors and attracts garden lovers from all over the world.



On this tour we will fly into Tullamarine Airport for our 2 night stay at the Best Western Carlton, located a stones throw from the Flower Show. Our southern capital is a beautiful and sophisticated city and our 2 night stay in Carlton will include many highlights such as Werribee State Rose Garden and the cosmopolitan Lygon Street.



11 Tepko Road, Terrey Hills

PO BOX 188 TERREY HILLS NSW 2084 | FAX: 02 9986 2455 | PH: 02 9986 2400
www.oncoursetours.com | ABN 65 002 335 686 2TA: 004591

Our journey from Melbourne to the Mornington Peninsula will take us through the Dandenong Ranges where we will explore some of the many delightful villages. Our accommodation on the Peninsula will be at the deluxe Brooklands of Mornington which provides a great base to explore this delightful part of Victoria at a leisurely pace. We will then travel to Lakes Entrance, situated on the edge of Ninety Mile Beach where the Gippsland Lakes meet the Southern Ocean. It is home to a large commercial fishing fleet and one of its many attractions is an abundance of fresh seafood. The six lakes that make up the system cover an area of over 400 square kilometres and are a haven for boating and fishing enthusiasts as well as providing habitat for an enormous number of waterbirds. During our stay we will explore the lakes and some of the interesting towns on the vast shoreline. Our stay is at the Esplanade Resort & Spa.

Our final night is at picturesque Merimbula and we will conclude the tour following the spectacular NSW coastline through Batemans Bay, the Shoalhaven and Illawarra coasts.

Other features include:

- * Melbourne City tour – Federation Square, Southbank, St Kilda, Port Phillip Bay, Albert Park, Botanic Gardens, Fitzroy Gardens and Williamstown
- * Queen Victoria Markets
- * Werribee Mansion and Victoria Rose Gardens
- * Dinner at Lygon Street in Carlton
- * Dandenong Ranges – Olinda, Monbulk and Emerald
- * William Rickets Sanctuary
- * Portsea, Rye and Rosebud
- * Arthur's Seat, Mornington gardens and vineyards
- * Lakes Entrance cruise
- * Dinner at the Merimbula Wharf Aquarium
- * Eden & Two Fold Bay
- * Bega
- * Batemans Bay & the Shoalhaven

Our accommodation for this tour is:

- | | | |
|---|----------------------------------|--------------|
| * 23 rd – 25 th March | Best Western Carlton | 03 9347 7922 |
| * 25 th – 27 th March | Brooklands of Mornington | 03 5973 9200 |
| * 27 th March | Esplanade Resort, Lakes Entrance | 03 5155 3055 |
| * 28 th March | Black Dolphin Hotel, Merimbula | 6495 1500 |

Cost per person is \$2,250.00 including twin share deluxe accommodation, all admissions, 6 cooked breakfasts, 5 lunches and 6 dinners. Single supplement is \$420.00.